

# Moreton Bay Rail Link industry briefing 21 June 2011

## Welcome

**Annastacia Palaszczuk MP**

**Minister for Transport and  
Multicultural Affairs**

## Project overview

# Moreton Bay Rail Link

## Corridor



- Corridor planned for over 100 years
- Six new rail stations
- 12.6km dual-track rail line
- Operational by 2016.

# Moreton Bay Rail Link

## Funding

Delivery of the Moreton Bay Rail Link is supported by all three levels of government.

The \$1.147 billion required for the project is jointly funded:

- Commonwealth Government (\$742 million)
- Queensland Government (\$300 million) + land
- Moreton Bay Regional Council (\$105 million).

# Moreton Bay Rail Link

## Project need

- Third largest local government area in Australia
- Currently more than 350,000 people
- Population set to exceed 500,000 by 2031
- More than half of the people leave the region everyday and 83% of these use a private vehicle for their journey
- Significant congestion on major roads.

# Moreton Bay Rail Link

## Sustainable growth

- Nation building project
- Catalyst for sustainable development in the Moreton Bay Region
- New stations will provide opportunities for transit-oriented development that will contribute to sustainable population growth.

# Moreton Bay Rail Link

## Progress to date

- Release Change Report – 10 Nov 2010
- Formal consultation period – 15 Nov 2010 – 25 Feb 2011
- Tri-partite Funding Agreement – 3 Dec 2010
- Survey work started along corridor – 18 October 2010
- Geotechnical Investigations – 18 April 2011
- Business Case – mid 2011.

## Reference design

## Station precincts

# Moreton Bay Rail Link: Petrie Connection



Caboolture Line

Anzac Ave

Amcor Mill

Petrie Station

Gympie Rd

# Moreton Bay Rail Link: Kallangur Station



# Moreton Bay Rail Link

## Kallangur TOD

- Concept Master Planning exercise undertaken
- Objective is to deliver a catalyst TOD project
- Staging - early development around the Kallangur train station.
- densities of approximately 43 – 55 dwellings per hectare are proposed.



# Moreton Bay Rail Link: Murrumba Downs Station



# Moreton Bay Rail Link: Mango Hill Station



# Moreton Bay Rail Link: Kinsellas Road Station



# Moreton Bay Rail Link: Rothwell Station



# Moreton Bay Rail Link: Kippa-Ring Station



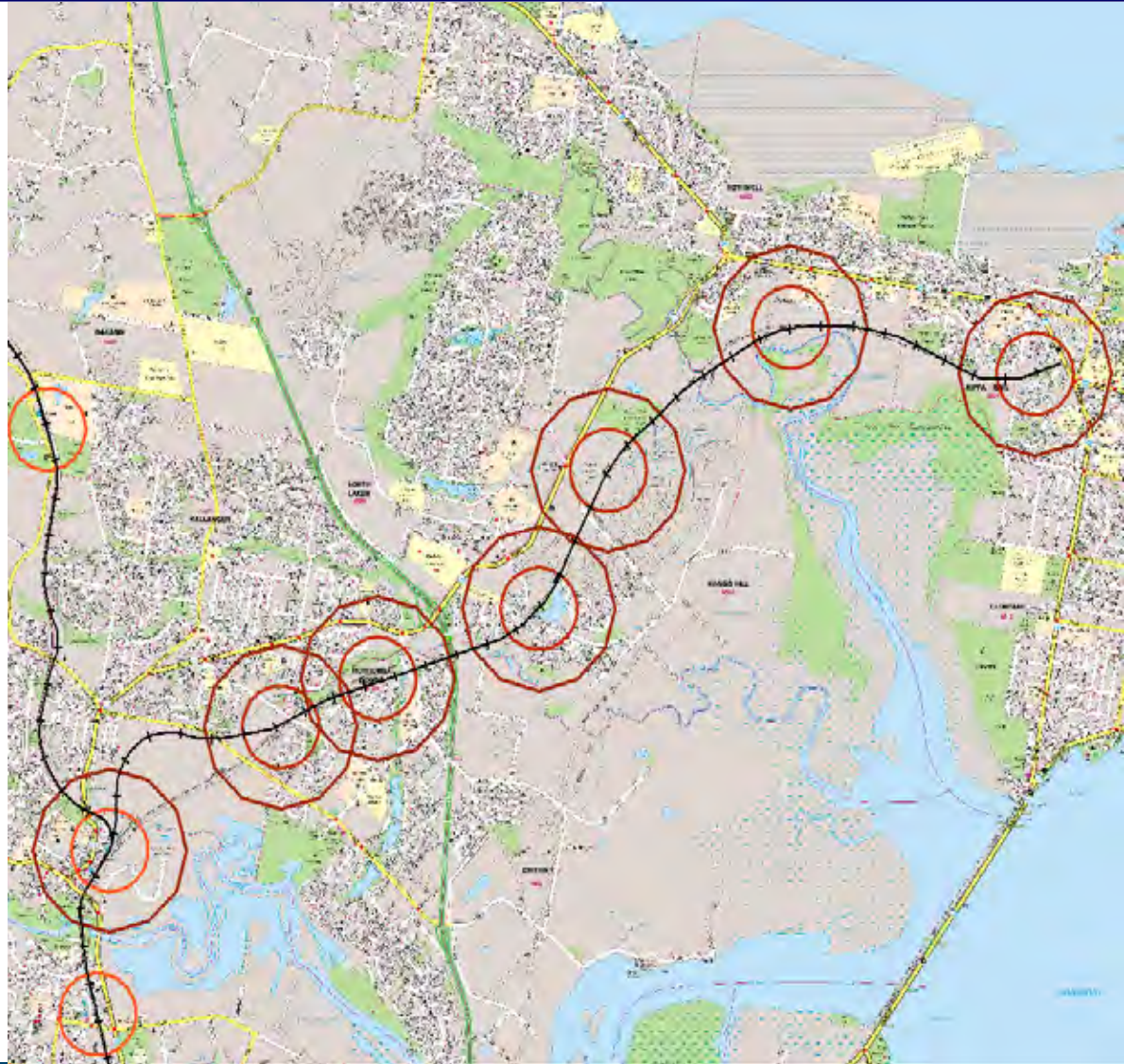
# Moreton Bay Rail Link

## Local Area Plan

Joint exercise between  
Moreton Bay Regional  
Council and Growth  
Management Queensland

Consider key city building  
outcomes such as:

- Increased density  
around public transport
- Improved access  
including walkability and  
cycle access.



# Moreton Bay Rail Link

## Environment

- Greenfield site
- Habitat for significant flora and fauna including koalas and kangaroos
- Skirts environmentally significant areas such as RAMSAR wetlands and declared fish habitat
- Areas of 'endangered' and 'of concern' regional ecosystems, freshwater wetlands and marine plants within proposed footprint.

# Moreton Bay Rail Link

## Community

- The alignment closely borders properties in residential suburbs
- Committed to working with residents and businesses to minimise impact during construction and operations.

# Moreton Bay Rail Link

## Key milestones

2003	Final Impact Assessment Study Report
June 2010	Preliminary Evaluation Report
Current	Project Change Report Draft Reference Design Community consultation 15 November 2010 – 25 February 2011 Business Case Preliminary surveys and on-site investigations
Mid- late 2011	Preliminary station design
Late 2011 - 2012	Procurement
2012	Construction commences
2016	Operations

## Project delivery

# Moreton Bay Rail Link

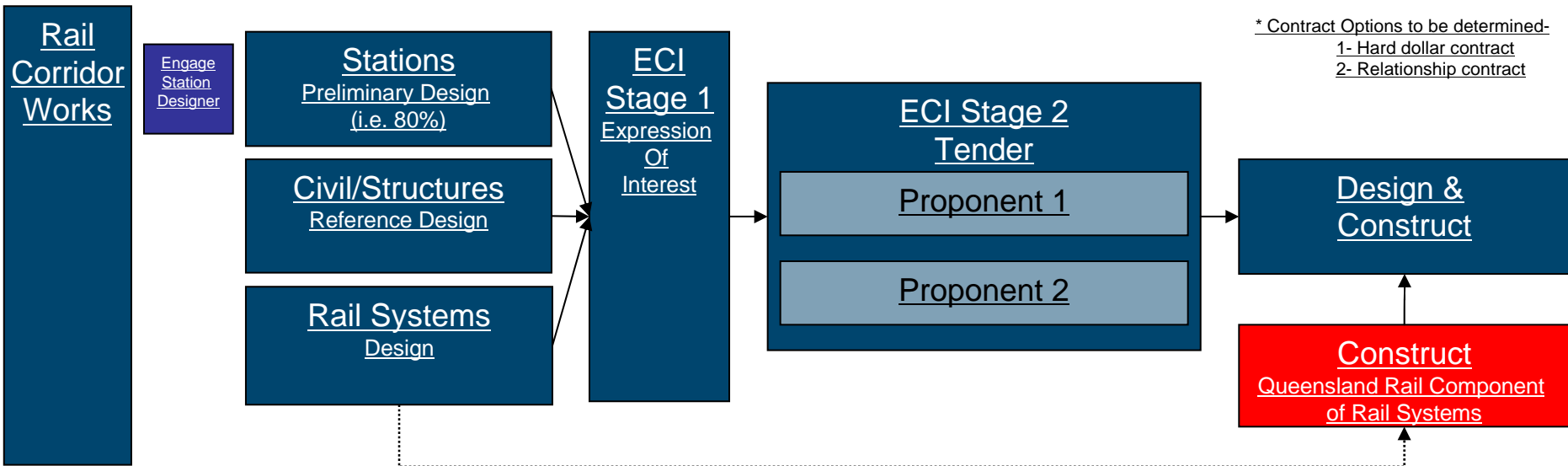
---

## Packages

- Transit oriented development (TODs)
- Roads
- Rail Corridor.

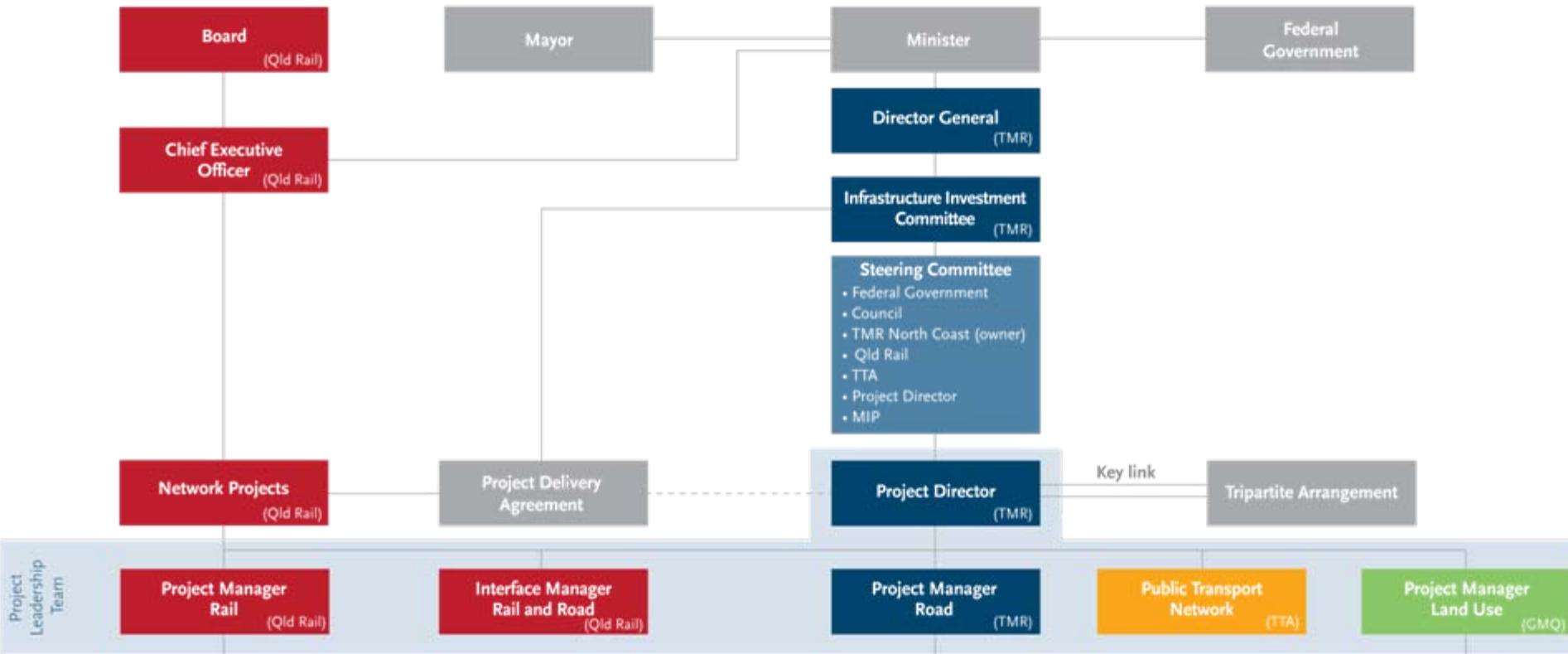
# Moreton Bay Rail Link

## Packages / Procurement Model (Subject to Government Approval)



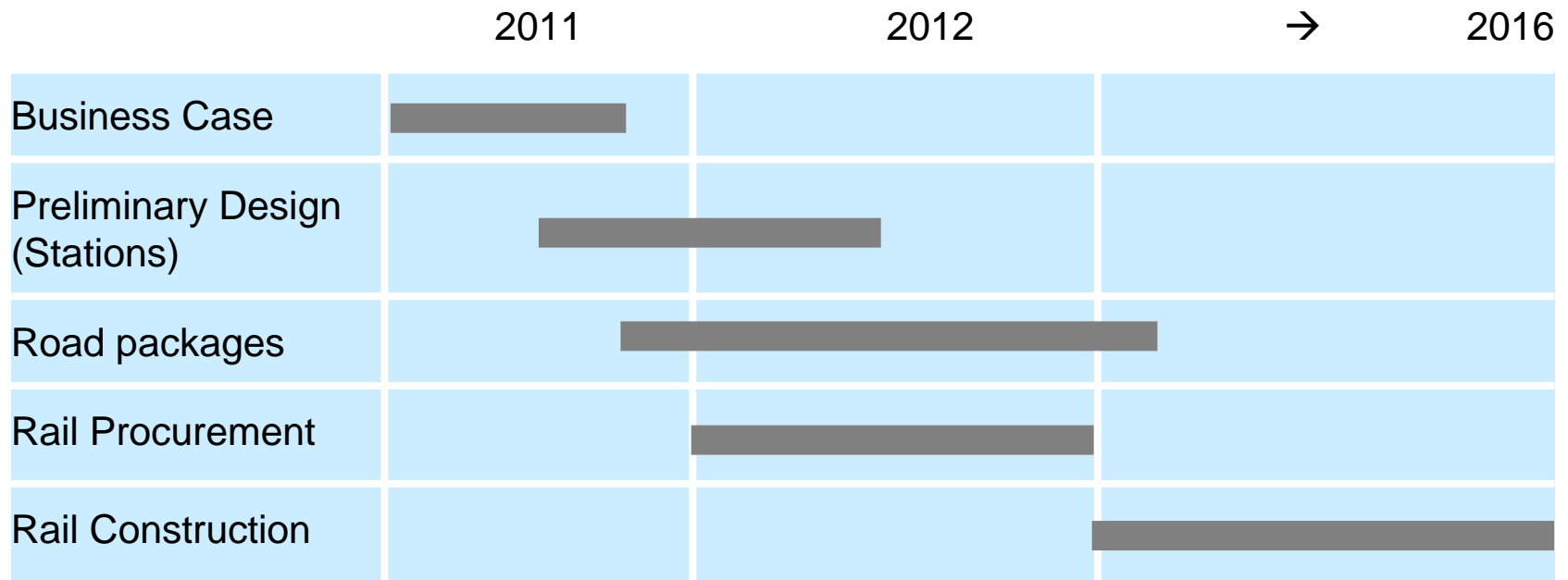
# Moreton Bay Rail Link

## Governance



# Moreton Bay Rail Link

## Indicative timing



# Moreton Bay Rail Link

## Next Steps

- Finalise business case and seek funding partners' endorsement for delivery
- Rail station design packages
- Engage technical advisor
- Resumptions
- Finalise environmental permits
- Road packages.

***Keep industry informed***

## Questions?

# Moreton Bay Rail Link

---

**For more information  
contact the Moreton Bay  
Rail Link Project Team**



**1 800 096 821**



**[moretonbayrail@tmr.qld.gov.au](mailto:moretonbayrail@tmr.qld.gov.au)**